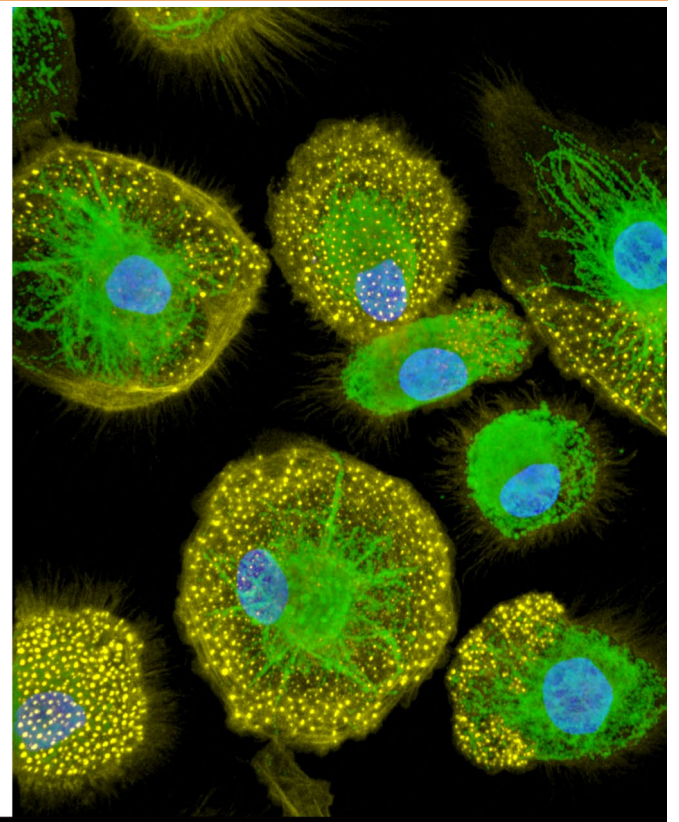
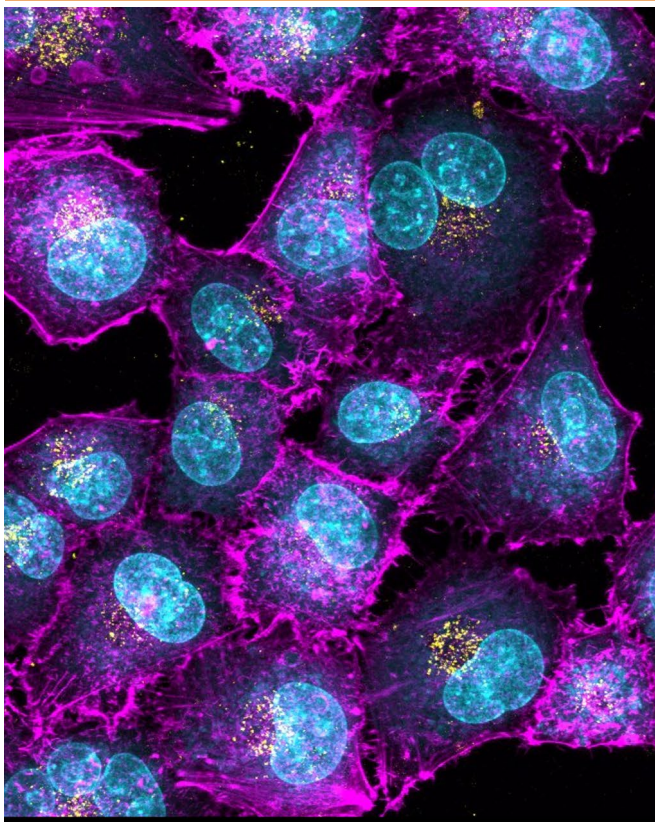


NANOPARTICLE UPTAKE THROUGH THE LENS OF CELL MORPHOLOGY: HOW CROWDING, SPREADING, AND INTRACELLULAR ORGANIZATION SHAPE UPTAKE AND INTRACELLULAR FATE



Luigi di Stolfo

Adolphe Merkle Institute

Thursday 11th June 2026

11 am, AMI Auditorium



adolphe merkle institute
excellence in pure and applied nanoscience

