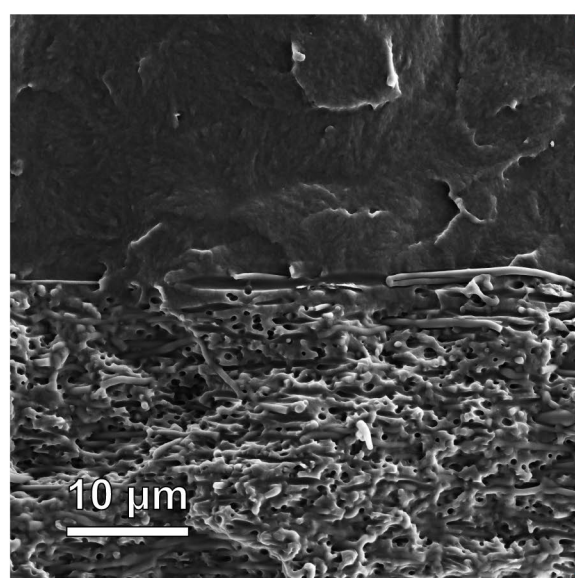
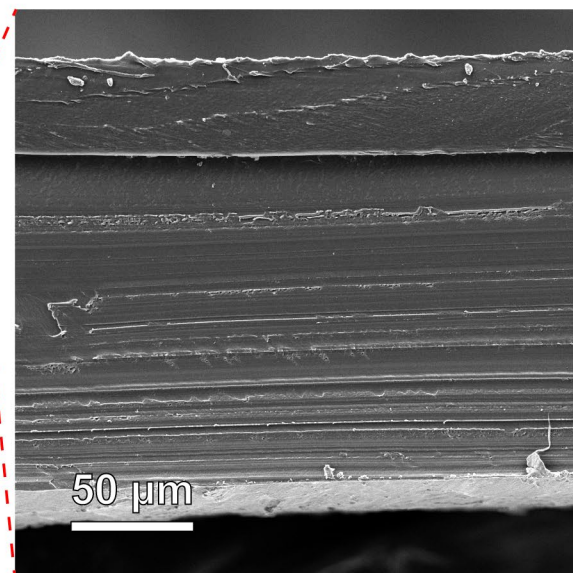
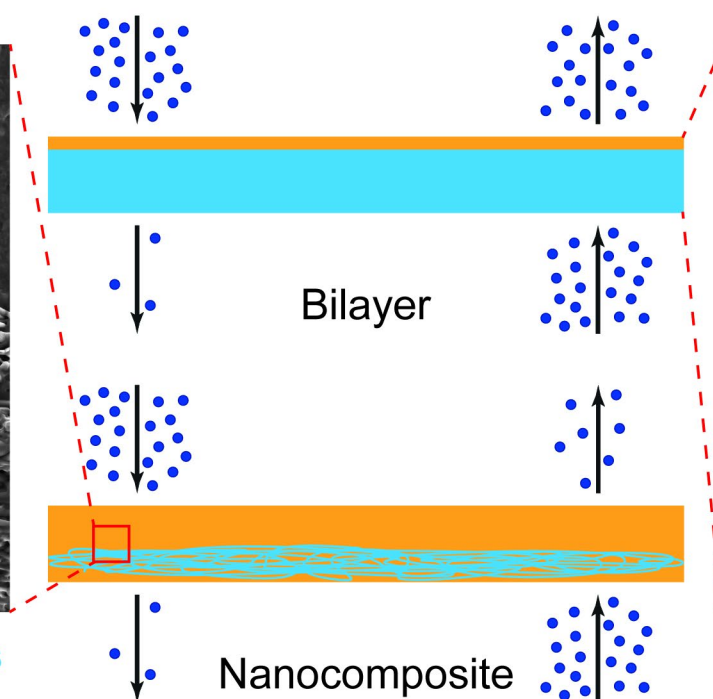


DIRECTIONAL WATER TRANSPORT IN DENSE ASYMMETRIC MEMBRANES

Directional water transport



SBS matrix + PVA nanofibers



PVA film + SBS coating

Luca Grillo

Adolphe Merkle Institute

Thursday 27th February 2025
11 am, AMI Auditorium



adolphe merkle institute
excellence in pure and applied nanoscience

